

FITTING INSTRUCTIONS V-8K106-2-WE

● Fitting instructions

Prior to fitting familiarise yourself with its simple action. **Caution:** Before fitting screws check position of glass and seals.

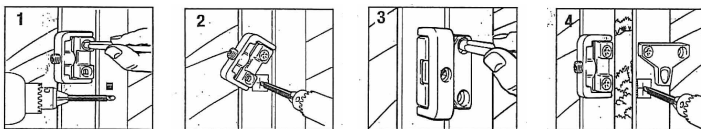
Position lock body onto opening window, with recess in body visible. Install as close as possible fixed frame whilst ensuring window can swing open, mark top fixing hole. Set drill depth, as shown in diagram, and carefully drill fixing hole (tape over hole centre will help prevent drill bit slipping) Loosely fix lock to window with a long 'thread forming' screw. Insert slowly by hand keeping square to frame, lubricate for easier fix. Ensure lock can be swung aside to allow bottom fixing hole to be drilled.(fig1)

With lock vertical, mark bottom fixing hole. Swing lock body aside to prevent damage and drill as before. Secure top and bottom fixing screws. **Do not over tighten.** (fig2)

Locate and secure staple into lock body with key, mark top fixing hole. Remove staple and drill fixing hole. Loosely secure staple with a short 'thread forming' screw. Check operation. (fig3)

With staple vertical, mark bottom fixing hole. Swing staple aside and drill as before, fit short 'thread forming' screw. Secure top and bottom screws. **Do not overtighten.** Check operation then insert plastic caps to conceal screwheads. (fig4)

N.B Equivalent imperial sizes are approximate



Yale[®]

The world's favourite lock

www.yale.co.uk E-mail: locksinfo@yale.co.uk