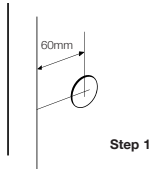




# Yale® Y3 Contemporary Nightlatch Fitting Instructions

## Tools Required



Step 1

1. At the height you want your lock, use a pencil to mark a spot exactly 60mm from the edge of the door. At that spot, drill a 32mm diameter hole through the door.
2. With the key removed, insert the cylinder through the ring and place it in the hole on the outside of the door. Hold the mounting plate against the inside of the door. If necessary, use a hacksaw to shorten the flat connecting bar so that it projects 16mm beyond the surface of the mounting plate.

**(Warning:** The projection of the connecting bar is important to ensure the lock works correctly. If the bar has to be shortened please make sure this does not fall below 16mm)

3. Drill a pilot hole using a 3mm drill bit to a depth of 25mm and secure the backplate to the door using the 25mm long screw provided. (Step 4) (DIY TIP: Mark your drill bit with sellotape or other coloured adhesive material at the required drill depth)

4. From the inside of the door, secure the mounting plate to the cylinder with the two flat-ended connecting screws supplied. Depending on your door thickness you may need to shorten the screws down using a hacksaw.

5. Position the mounting plate 3mm from the edge of the door and then secure to the door with the wood screws provided.

6. Place the lock case over the mounting plate, making sure the flat connecting bar is inside the slot in the lock case. Push the lock case down and sideward. Mark the outline of the lip of the lock case on the edge of the door, remove the lock body and chisel a recess to hold it securely in place when the lock is fitted.

7. Repeat step 5 to position the lock case flush with the edge of the door. Secure the lock case to the mounting plate with the two small screws provided.

**(Tip:** With the lock fitted if you experience resistance turning the inside knob or turning the key in the outside cylinder the length of the connecting bar will need adjusting. Please use a file to take a little more off the length of the connecting bar and refit the lock case. This will only need fine tuning to ensure the smooth operation of your lock)

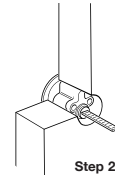
8. Close the door and using the lock case as a guide mark the position of the remaining component the staple on the door frame. Chisel out a recess in the door frame to hold the staple flush with the frame and fix it with the screws provided.

The fitting of your new Yale lock is now complete.

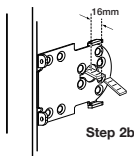
### FITTING INSTRUCTIONS - REPLACING AN EXISTING P77

1. Unscrew the existing P77 lock from the door and remove the cylinder.
2. Use the fitting instructions above from points 2 - 7.

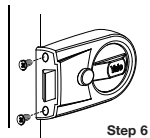
**Please note:** No chiselling of the door is required if you are replacing an existing Yale P77 lock.



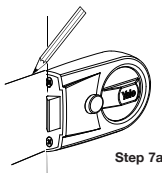
Step 2a



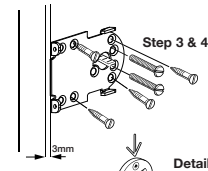
Step 2b



Step 6

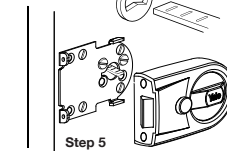


Step 7a

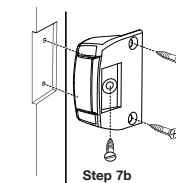


Step 3 &amp; 4

Detail



Step 5



Step 7b

### CAUTION:

This lock is not designed for use with outward opening doors. Do not attempt to modify it.

**DOOR THICKNESS:** This lock is suitable for doors up to 57mm thick or 54mm where a doorpull is fitted.

**CARE OF YOUR CYLINDER RIM LOCK:** Never take your cylinder apart. Never oil or paint the cylinder. To lubricate, use a Teflon based solution.

**LOCK:** Moving parts may be greased.

### FOR MAXIMUM SECURITY:

The gap between the lock body and the 'staple' should be kept to a minimum and must never exceed 5mm.



The world's favourite lock since 1843

School Street, Willenhall, West Midlands WV13 3PW

www.yale.co.uk Tel: +44 (0) 1902 364647 E-mail: info@yale.co.uk

