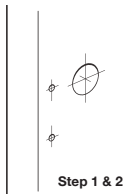




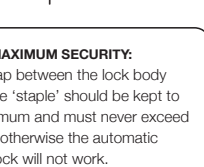
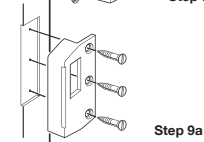
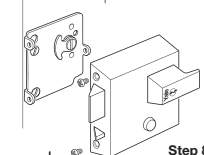
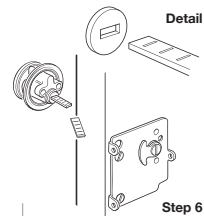
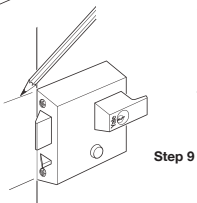
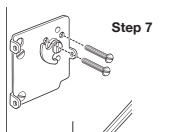
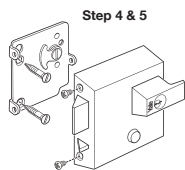
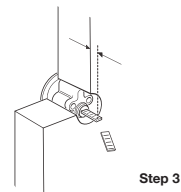
# P1 & P2 Double Locking Nightlatch Fitting Instructions

## Tools Required



- At the height you want your lock, use the template supplied to mark the centres of the holes, as indicated, on the inside of the door. At the middle mark drill a 32mm diameter hole through the door, as indicated on the template supplied.
- At each of the other two marks, drill a 3mm diameter hole to a depth of 22mm.  
*(DIY TIP: Mark your drill bit with sellotape or other coloured adhesive material at the required drill depth)*
- With the key removed, place the cylinder through the brass ring and place it in the hole. Holding the cylinder and ring tight against the door, mark a point on the flat connecting bar 4mm from the surface of the back of the door. Carefully shorten the connecting bar using a fine-toothed hacksaw.
- Unscrew the screws from each side of the latch bolt and remove the mounting plate from the back of the lock body.
- Using the wood screws provided, screw the mounting plate to the back of the door at the spots where you drilled the two small holes at Step 2.
- With the cam (the movable piece on the back of the mounting plate) in the illustrated position, place the cylinder through the brass ring and into the door. Make sure that the flat connecting bar enters the slot in the mounting plate.
- Secure the cylinder to the mounting plate with the two flat-ended connecting screws provided, inserted through the top pair of holes in the centre of the mounting plate. If necessary, use a fine-toothed hacksaw to shorten screws to ensure that they fit tight onto the mounting plate. You may also need to insert the key into the cylinder and turn it to ensure adequate clearance for the second screw. **Ensure you remove the key before the next step.**
- Locate the lock body onto the mounting plate, positioning the locating peg at the rear of the lock body into the hole in the mounting plate. Secure by replacing the two lock body fixing screws which you removed at Step 4.  
**Tip:** Angle the lock body so the rear of the body fits onto the locating peg first before pushing the lock completely onto the mounting plate.
- Close the door and, using the lock body as a guide, mark the position of the remaining component – the 'staple' – on the door frame. Chisel out a recess in the door frame to hold the staple flush with the frame and fix it with the screws provided.

The fitting of your new Yale lock is now complete and guaranteed for 2 years.



### CAUTION:

This lock is not designed for use with outward opening doors. Do not attempt to modify it.

**DOOR THICKNESS:** This lock is suitable for doors up to 57mm thick or 54mm where a doorpull is fitted.

**CARE OF YOUR CYLINDER RIM LOCK:** Never take your cylinder apart. Never oil or paint the cylinder. To lubricate, use a Teflon based solution.

**LOCK:** Moving parts may be greased.

### FOR MAXIMUM SECURITY:

The gap between the lock body and the 'staple' should be kept to a minimum and must never exceed 5mm, otherwise the automatic deadlock will not work.



The world's favourite lock since 1843

School Street, Willenhall, West Midlands WV13 3PW  
www.yale.co.uk Tel: +44 (0) 1902 364647 E-mail: info@yale.co.uk

Issue No: 01-2012

