

ASSA ABLOY

3G114E - 5 LEVER BS 3621 INSURANCE DEADLOCKS

Fitting instructions

Before commencing, please read thoroughly to familiarise yourself with these instructions and use of the template. Unless otherwise stated all illustrations show door hung right, viewed from inside and opening inwards. The lock however is suitable for inward or outward opening doors, hinged left or right.

1a. Lock Fitting.

Mark height line lightly on the frame, door face and edge 120mm (4 3/4") above the desired keyhole position also marking a centre line down the door edge. Carefully cut template from the fitting instructions along the bold dotted line.

1b. Place the template on the door edge with the arrows aligned with the centre line and the top of the template level with the height line. The template can be taped temporarily in position to prevent movement. Mark the centres of the holes to be drilled for the lock body with a Bradawl.

2a. Before drilling holes mark the required depth on the drill bit with adhesive tape. Drill holes for mortice lock with a 19mm (3/4") bit, 3mm (1/8") deeper than the lock to be fitted. Please take great care to keep the drill level and straight, we recommend the use of a brace and bit for drilling holes for lock and locking box mortice.

2b. Carefully remove the remaining wood from the mortice using a 19mm (3/4") chisel so that the lock body fits snugly without excessive force.

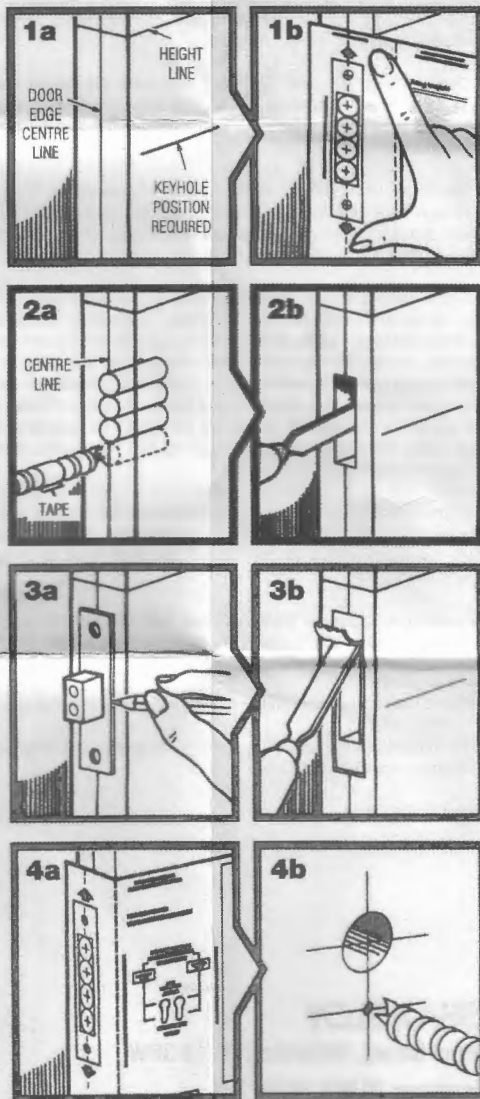
N.B On no account should the lock be hammered into place. When testing the fit, it is a good idea to do so with the bolt in a locked position. By holding the bolt the lock can more easily be removed from the mortice.

3a. Insert the lock into the prepared mortice then, ensuring it is parallel with the door edge, mark around the forend.

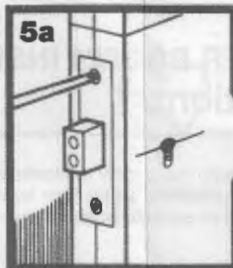
3b. Remove the lock and carefully chisel out a recess to enable the faceplate to lie flush with the door edge.

4a. Fold template along the vertical dotted line and place around the door edge with the top level with the height line. Select the keyhole position to suit your lock (67mm or 80mm). Mark the hole centres of the keyhole with a Bradawl.

4b. Drill out holes for keyhole using an 8mm (5/16") and a 5mm (3/16") drill bit as shown on the template. Please ensure the drill is level and straight and take care when the drill breaks through the wood on the opposite side to reduce splintering. Drill through the door until the point of the drill breaks through on the opposite side. Working from the opposite side complete drilling and open out to form a keyhole shape. Using a small round and flat file to form keyhole to allow easy entry of key.



5a. With the deadbolt thrown fit the lock into the prepared mortice complete with the face plate and mark fixing holes with a bradawl. Secure with 1 1/4" x 8 screws provided using a no. 2 pozidrive screwdriver.

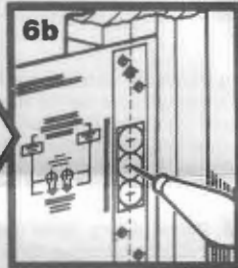
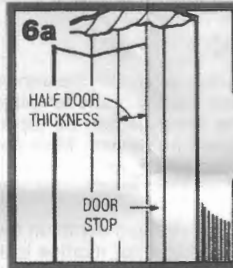


5b. Place the escutcheon over the keyhole and then insert the key. Ensure the key is central in the escutcheon then mark the screw holes with a bradawl. Remove the key and fix to the door with the 1/2" x 4 slotted head screws using a suitably sized screwdriver

N.B It is recommended that for privacy the escutcheon with the flap is fitted internally. Test the lock from both sides with the key to ensure smooth operation of the bolt before proceeding

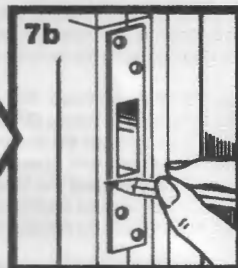
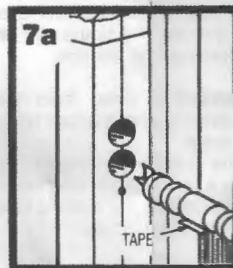
6a. Locking box fitting.

Measure the thickness of the door edge and mark a vertical line on the door frame equal to half this dimension. This measurement should be taken from the door stop.



6b. Place the locking box template level with the height line marked previously and align the arrows with the vertical line. Mark the centres of the holes to be drilled for the locking box with a bradawl.

7a. Drill holes using a 22mm (7/8") drill bit to a depth of 25mm (1"). Again take care to keep the drill level and straight. Chisel out the wood for the locking box and box flanges (if applicable) to give a snug fit.



7b. Place locking box in position making sure it is parallel with door frame and mark around its edge. Clearance between faceplate and locking box should be adequate to ensure smooth operation, recess into frame if required allowing for the thickness of the locking plate. Fit locking box and mark the position of the fixing screw holes with a bradawl and secure into place using a No.2 pozidrive screwdriver. It may be necessary to countersink screw holes for correct seating of locking box. Close the door and test the operation.

When the deadbolt is locked it is quite normal for minimal play to be apparent between the locking box and bolt. This is not a defect but is necessary to prevent the deadbolt from binding, causing premature wear.

It is important to use all parts supplied with this lock on your installation to comply with BS 3621:2007. If the lock requires lubricating use only a proprietary maintenance fluid (e.g WD40) not oil.

Additional Keys

To ensure trouble free operation of lock, please request that extra keys are cut from genuine key blanks

N.B All dimensions quoted in the fitting guide and on the template are approximate and for guidance only. The lock may differ from the illustration shown. E. & O.E

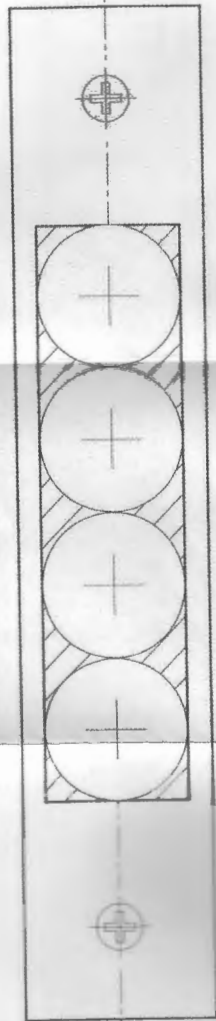
Printed in England

ASSA ABLOY
School Street, Willenhall WV13 3PW
Telephone: 01902 366911

CAREFUL' ALONG LINE AND PLACE EDGE ON HEIGHT LINE 

Centre line of door.

Drill 4 holes 19mm (3/4") dia. for mortise lock.



**Fitting Template
for 3G114E**

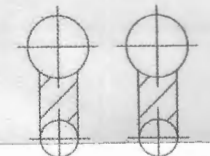
Due to working tolerances in both printing and manufacture minimal variation may exist between template and product. Please check before proceeding.

**Select position of
keyhole to suit your
size of lock.**

For 67mm
lock.

For 80mm
lock.

Drill
8mm (5/16")
dia. hole.



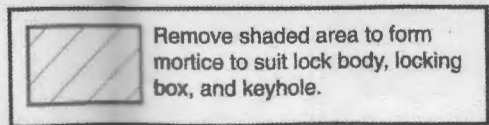
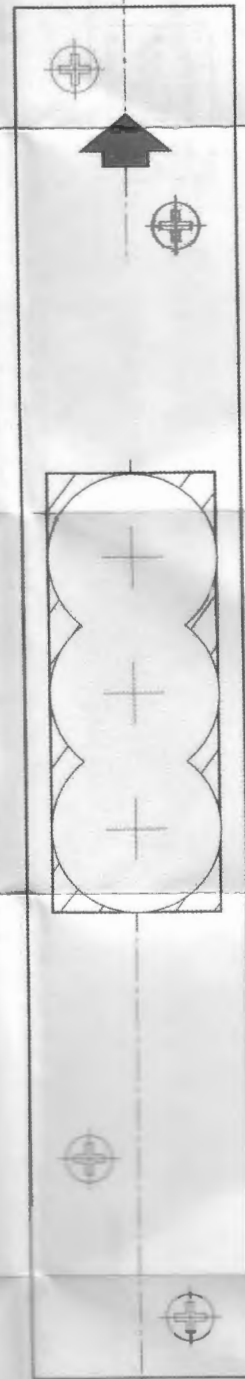
Drill 5mm (3/16")
dia. hole.

Fold dotted line along door edge to mark position of keyhole.

40.5 (REF)

53.5 (REF)

Drill 3 holes 22mm (7/8") dia. for locking box.



Tools Required

- Drill
- 5mm (3/16"), 8mm (5/16")
19mm (3/4") & 22mm (7/8") drill bits
- 19mm (3/4") chisel
- Bradawl
- Pozidrive and small flat-bladed
screwdrivers
- Small round and flat files
- Pencil
- Ruler
- Scissors

NB: Equivalent imperial sizes are approximate
All fixing screws supplied.

S440-212A