

# Chubb

## 3K70

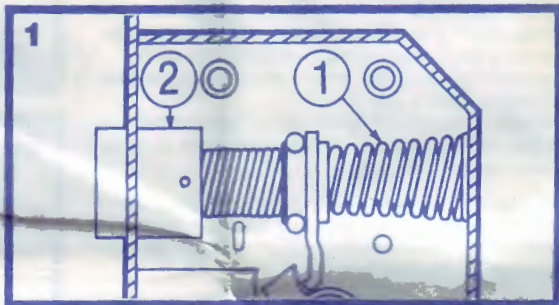
## 2-Bolt Mortise Lock Fitting Instructions

Before commencing, please read thoroughly to familiarise yourself with these instructions and use of the template. Unless otherwise stated all illustrations show door hung right, viewed from inside and opening inwards. The lock however is suitable for inward or outward opening doors, hinged left or right.

### 1. Reversing of latch bolt

If hand of lock needs to be reversed remove lock cap. Using great care, remove cone shaped spring (1) and latch bolt (2). Reverse latch bolt (2) and replace spring (1). Fit lock cap.

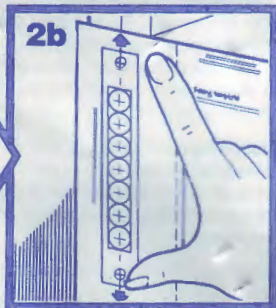
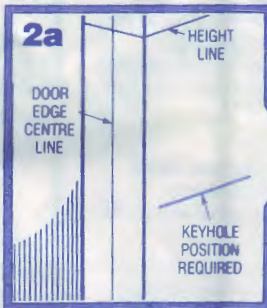
If in doubt consult your local Chubb locksmith.




### 2a. Lock fitting.

Mark height line lightly on the frame, door face and edge 157mm (6 $\frac{3}{16}$ ") above the desired keyhole position also marking a centre line down the door edge. Carefully cut the template from the fitting instructions along the bold dotted line.

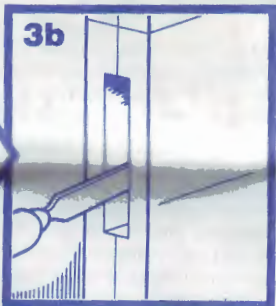
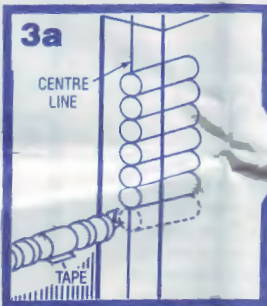
2b. Place the mortise lock template on the door edge with the arrows aligned with the centre line and the top of the template level with the height line. The template can be taped temporarily in position to prevent movement. Mark the centres of the holes to be drilled for the lock body with a bradawl.



3a. Before drilling holes mark the required depth on the drill bit with adhesive tape. Drill holes for mortise lock with a 19mm ( $\frac{3}{4}$ ") bit, 3mm ( $\frac{1}{8}$ ") deeper than the lock to be fitted. Please take great care to keep the drill level and straight, we recommend the use of a brace and bit for drilling holes for lock and striker box mortise.

3b. Carefully remove the remaining  from the mortice using a 19mm ( $\frac{3}{4}$ ") chisel so that the lock body fits snugly without excessive force.

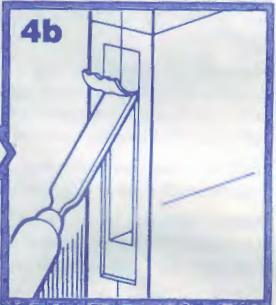
*N.B. On no account should the lock be hammered into place. When testing the fit it is a good idea to do so with the bolt in a locked position. By holding the bolt the lock can more easily be removed from the mortice.*



4a. Insert the lock into the prepared mortice then ensuring it is parallel with the door edge mark around the forend.

4b. Remove the lock and carefully chisel out a recess to enable the faceplate to lie flush with the door edge.

*N.B. It may be necessary to countersink the faceplate and fixing screw holes.*



**5a.** Fold the template along the vertical dotted line and place around the door edge with the top level with the height line. Mark the centres of keyhole and spindle hole with a Bradawl.

**5b.** Drill out holes for keyhole using an 8mm ( $\frac{5}{16}$ " ) and a 5mm ( $\frac{3}{16}$ " ) drill bit as shown on the template. Drill through the door until the point of the drill breaks through on the opposite side. Working from the opposite side complete drilling and open out to form keyhole shape. Using a small round file form keyhole to allow easy entry of key. Drill out spindle hole using a 19mm ( $\frac{3}{4}$ " ) drill bit allowing the point of the drill to break through on the opposite side. Working from the opposite side complete drilling for spindle hole.

*Please ensure the drill is level and straight and take care when the drill breaks through the wood on the opposite side to reduce splintering.*

**6a.** Remove faceplate. Fit the lock into the prepared mortice and mark fixing holes with a Bradawl. Secure with the 1 1/4" x 8 screws provided using a no. 2 Pozidrive screwdriver. Replace faceplate.

**6b.** Fit your handle set (available separately) following the manufacturers instructions.

*We recommend the use of Chubb 3K70/432 full length handle set, available from your Chubb stockist.*

Test the lock from both sides with the key and handle to ensure smooth operation of the deadbolt and latch bolt before proceeding.

#### **7a. Striker box fitting.**

Measure the thickness of the door edge and mark a vertical line on the door frame equal to half this dimension. This measurement should be taken from the door stop.

**7b.** Place the striker box template level with the height line marked previously and align the arrows with the vertical line. Mark the centres of the holes to be drilled for the striker box with a Bradawl.

**8a.** Drill holes using a 22mm ( $\frac{7}{8}$ " ) drill bit to a depth of 25mm (1" ). Again take care to keep the drill level and straight. Chisel out the wood for the striker box and box flanges (if applicable) to give a snug fit.

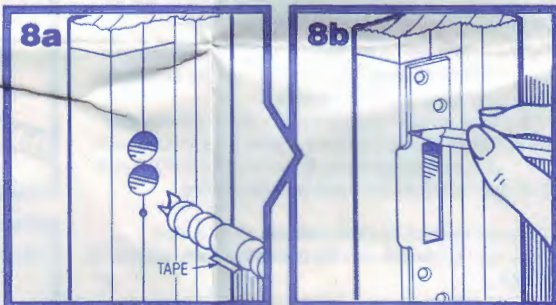
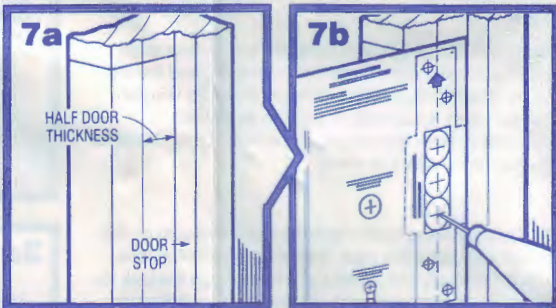
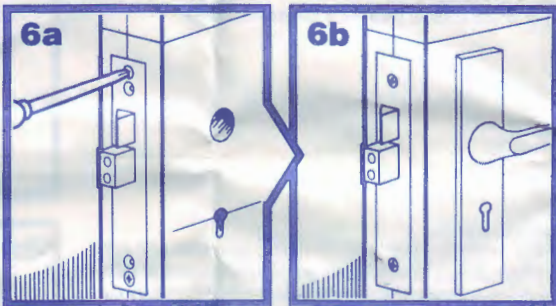
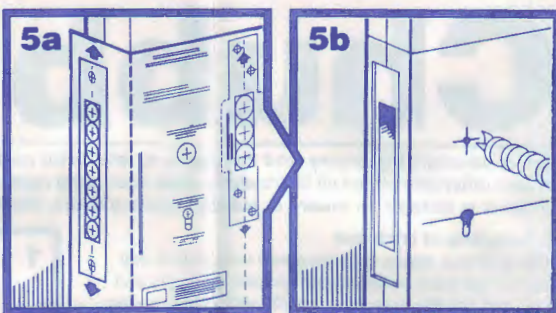
**8b.** Place striker box in position making sure it is parallel with door frame and mark around its edge. Clearance between faceplate and striker box should be adequate to ensure smooth operation. Recess into frame if required. Cut away wood to take the lip of striker box (angle of lip should not be altered). Fit striker box and mark the position of the fixing screw holes with a Bradawl and secure in place using a no. 2 Pozidrive screwdriver. It may be necessary to countersink screw holes for correct seating of striker box. Close the door and test the operation.

When the deadbolt is locked it is quite normal for minimal play to be apparent between the striker box and bolt. This is not a defect but is necessary to prevent the deadbolt from binding, causing premature wear.

If the lock requires lubricating use only a proprietary maintenance fluid (e.g. WD40) not oil.

#### **Additional Keys**

To ensure trouble free operation of lock, please request that extra keys are cut from genuine Chubb key blanks.



All dimensions given on instruction sheet and template are approximate.

Printed in England

**Chubb Locks**  
Wood Street,  
Willenhall, WV13 1LA  
Telephone: 01902 366911

Centre line of door.



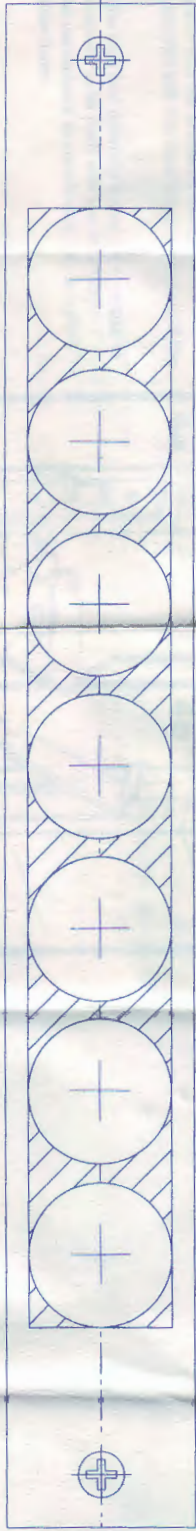
Carefully cut along line and place edge on height line.



### Fitting Template for 3K70

Due to working tolerances in both printing and manufacture minimal variation may exist between template and product. Please check before proceeding.

Drill 7 holes 19mm (3/4") dia. for mortice lock.



Fold dotted line along door edge to mark position of keyhole and spindle hole.

Drill 19mm (3/4") dia. hole.




Drill 8mm (5/16") dia. hole.



Drill 5mm (3/16") dia. hole.

Drill 3 holes 22mm (7/8") dia. for striker box.



 Remove shaded area to form mortice to suit lock body, striker box, and keyhole.

## **Comprehensive fitting instructions with template**

All fixing screws supplied

### **Tools required:**

- Drill with 5mm ( $\frac{3}{16}$ "<sup>1</sup>), 8mm ( $\frac{5}{16}$ "<sup>2</sup>), 19mm ( $\frac{3}{4}$ "<sup>3</sup>) and 22mm ( $\frac{7}{8}$ "<sup>4</sup>) dia. bits.
- Bradawl
- Chisel 19mm
- Mallet
- No. 2 pozidrive screwdriver
- Round file 5mm ( $\frac{3}{16}$ "<sup>5</sup>) dia.
- Pencil
- Rule
- Scissors

S440 150