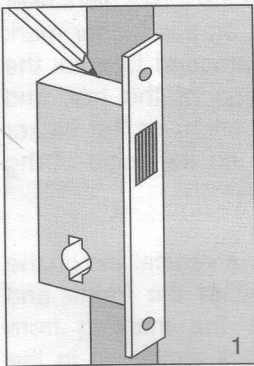
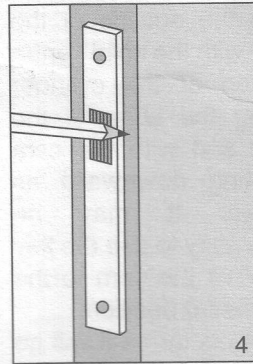


BANHAM M2002 & M2008 FIXING INSTRUCTIONS

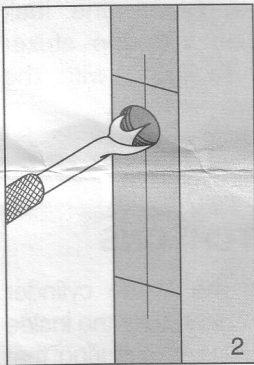
A. FITTING THE LOCK



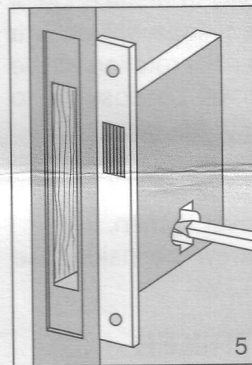
Position the lock as near mid height of the door as possible, taking care to avoid any door joints, and holding the lock against the door mark the top and bottom of the lock case on the door edge.



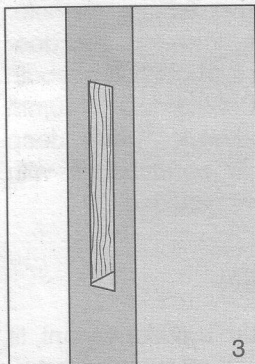
Insert the lock into the mortice and mark around the forend on the door edge. Chisel a recess to accommodate the lock forend and face plate.



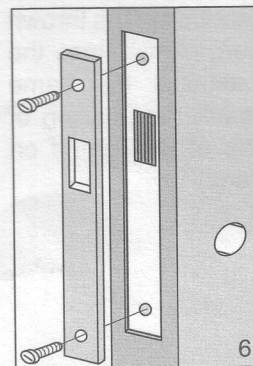
Between the two lines mark a central vertical line on the edge of the door and along this line drill a series of 15mm (5/8") diameter holes a little deeper than the lock.



Holding the lock against the face of the door, ensuring that the face plate is flush with the edge of the door and in line with the forend recess, mark the position of the cylinder and drill a 32mm diameter hole from both sides of the door.



Chisel out the remaining wood to make a rectangular mortice, squaring up the top and bottom corners.

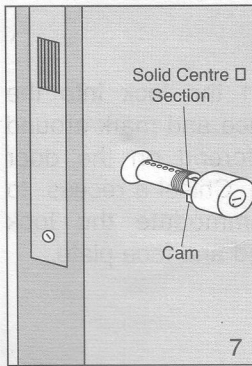


Fit the lock into the door and secure with screws provided. With the lock bolt withdrawn, fit the faceplate.

BANHAM PATENT LOCKS LIMITED

Registered Office: 233-235 Kensington High Street, London W8 6SF Tel: 020 7622 5151

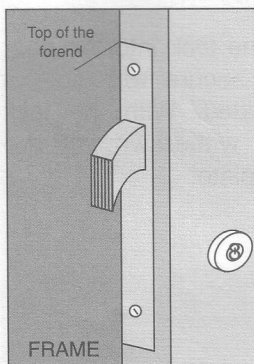
B. FITTING THE CYLINDER



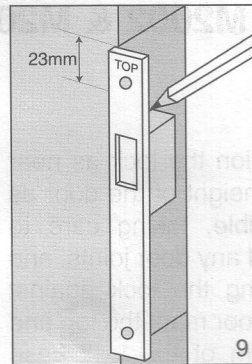
With the lock bolt in the withdrawn position, offer the cylinder to the lock from the outside of the door with the solid centre portion of the cylinder facing the edge of the door and with the cam pointing downward as shown. It may be necessary to use the key to move the cam to the downward position.

Push the cylinder into the lock as far as it will go and whilst continuing to push rotate the cylinder in a direction moving the cam away from the edge of the door. After 90° rotation the cylinder will enter a little further into the lock and further rotation will be prevented. At this position it will be possible to throw and withdraw the bolt with the key. From the inside of the door insert the two metal thread screws through the lock case and screw into the outside rose. Do not over tighten. From the inside of the door screw the inside rose onto the cylinder and tighten.

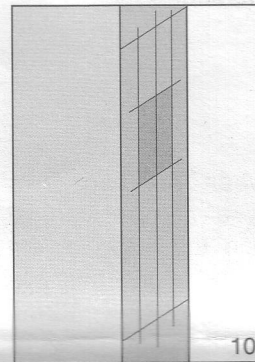
C. FITTING THE BOX STRIKER



With the door open and the deadbolt in the thrown position, gently close the door against the frame and mark the position of the top of the forend on the frame.

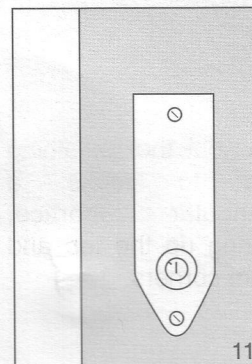


Measure 23mm up from the forend mark and ensuring that the end marked top is at the top, place the top of the striker plate on this higher mark and proceed to mark the position of the box and the bottom of the striker plate on the edge of the frame.



Draw a vertical line on the centre of the frame and using the marking from the box striker let in the striker flush with the frame. Check the lock function with the striker prior to fixing with the screws provided.

D. FITTING THE ESCUTCHEONS



Place the inside cylinder escutcheon over the inside cylinder and ensuring that the escutcheon is vertical drill two 6.5mm diameter holes through the door open out both holes at both sides of the door to 10mm diameter x 10mm deep and fit escutcheons with screws provided.

E. FITTING THUMBTURN

When fitting an M2008 thumbturn cylinder variant, fit the turn-knob and secure with the screw provided.

BANHAM PATENT LOCKS LIMITED

Registered Office: 233-235 Kensington High Street, London W8 6SF Tel: 020 7622 5151