

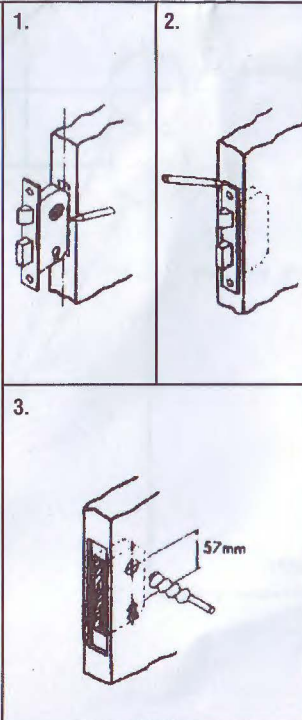


5 Lever Mortice Lock 51mm Backset

- This product range has 1000 key variations.
- Steel case with integral anti-drill plate on cap and case.
- 2 hardened steel rollers in brass deadbolt.
- 5 close gated levers with built-in anti-pick device.
- Strong, steel box striking plate.
- Brass latch bolt may be reversed on mortice sash locks
- Easy fit replacement for most mortice locks of the same overall width.
- Mortice lock follower suitable for 5/16" or 8mm spindle.
- Rebated conversion sets available 13mm & 25mm No. 42.
- Keyhole aperture protected by curtain.
- 3 steel, plated, unnumbered keys.
- The box striker/locking plate is constructed from STEEL to resist attack and to meet the requirements of British Standard BS3621:1998 for Thief Resistant Locks.

FITTING INSTRUCTIONS

1. Mark a central vertical line down the edge of the door at the selected position.
Position lock centrally against line and mark around lock case.
Cut or drill out a slot to suit lock case ensuring a good but not overtight fit.
2. Insert lock into door with loose forend held in position, mark around forend, remove lock and recess door 3.5mm deep to allow flush fitting.
Using template, on reverse of this sheet, mark on door position of spindle and keyhole
3. Drill a 19mm hole for the spindle and two 10mm holes for the key from both sides into the mortice.
If latch bolt requires reversing, with the lock on a clean level surface proceed in the following manner
 1. Remove all pozidrive screws.
 2. Ease off the cap.
 3. DO NOT DISTURB THE LEVERS OR ROTOR.
 4. Note the position of the three springs near the latch bolt and remove the latch bolt and follower with its springs attached.
 5. Replace the latch bolt and follower in the required position ensuring that the springs are returned to their correct locations.
 6. Replace the cap, checking that it has seated correctly, and insert all pozidrive screws.
 7. Check all operations of the lock.



TOOLS REQUIRED: Screwdriver Pozidrive No. 2 Point
2.5, 3, 10 and 19mm Drills
16mm Chisel

4. Remove all chippings from the mortice and insert lock into door. Drill 2.5mm pilot holes and fix with two No. 8 screws provided.
Fix outer forend and check operation.
5. With lock bolt out, close door to frame and mark on both latch bolt and lock both positions.
6. Transfer the lines of both bolts onto the edge of the frame. Position the striker plate (ensure latch head lines up with edge cut out the frame to accept the box of the striker (22 mm deep), insert box into hole and mark around striker plate.
Remove wood until striker plate finishes flush with the frame.
Fix with two of the four screws provided.
Fit door furniture and check lock operates freely with door closed.
Adjust striker if necessary and fix with remaining screws.

